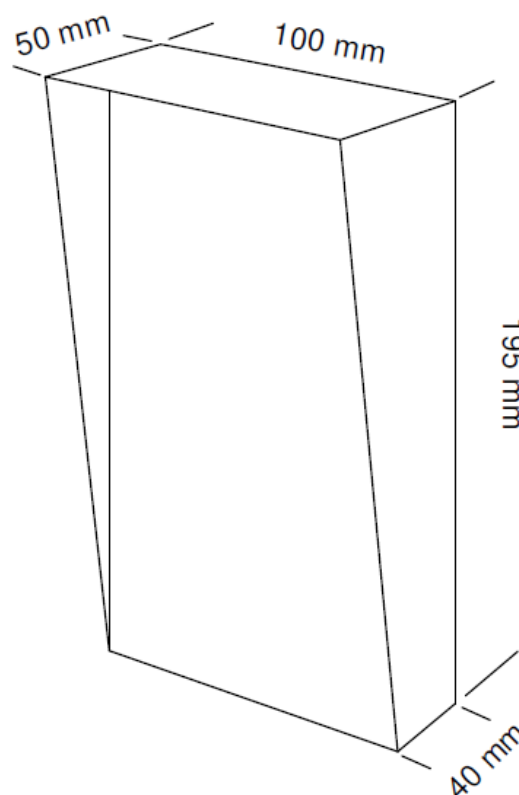


Access Control with the 3000V2 GSM Multi Channel Intercom



- Metal Keypad
- Robust Anti-vandal unit
- Stainless-steel Door Station
- Easy Installation—four wires only (Power Supply and Door /Gate Release)
- Anti-vandal Speaker and Microphone
- Water resistant unit for external use
- Front panel illuminated by Blue Light at night
- Operational voltage: 12 ac/dc or 24V dc only
- Wireless GSM Intercom for up to 333 houses
- Wireless programming by phone from anywhere
- Full Access Control Keypad for up to 1000 users
- Guiding Speaking System enabling easy programming
- No range limit and no cost to open gate with valid mobile phone.



Technical:

Dimensions in mm:	H 195 x W 100 x D 50
Operation voltage:	12V ac/dc / or 24V dc only
Power supply rating:	Min. 1.2A @ 12V dc
Power supply ripple:	Max. 120mV
Input current in idle mode:	25mA @ 12V
Input average current:	100mA @ 12V
GSM frequencies supported in NZ. (subject to coverage)	2 Degrees Vodafone

General Information

The 3000V2 is a Multi Channel GSM wireless Intercom system that can save you enormous hours of labour in installation and kilometres of wiring which is required for installing intercoms and access control system to any building of apartments or for any complex of up to 333 houses.

The installation of the unit only requires connection to power supply and connection of two wires for command to open the gate.

The unit requires a GSM SIM card to be used to make calls to the houses.

Intercom Operation

On standby, when the # key is pressed, the system will announce:

"Please press the unit number followed by the hash (#) key".

After which, the visitor will press the unit's number he wants to call, followed by the hash key.

(For example, 23 # for house number twenty three)

Then, the system will announce:

"Please wait; your call will be answered shortly".

The system will dial the first phone number of the unit which was programmed into the system, and wait for the number of rings which was programmed. If there was no answer or in case line was busy, the system will hang up automatically and dial the second and third number of the unit accordingly. If there was no answer to any of the three numbers in the system, the system will then announce:

"Your call was not answered, please try later".

If the call was answered by any of the phone numbers, then, the owner of the unit can talk with the visitor and press the hash key (#) on his phone to open the pedestrian gate (relay 1) or press the star key (*) on his phone to open the driveway gate (relay 2). Then the system will announce to the visitor:

"The gate is open, please come in".

Access Control

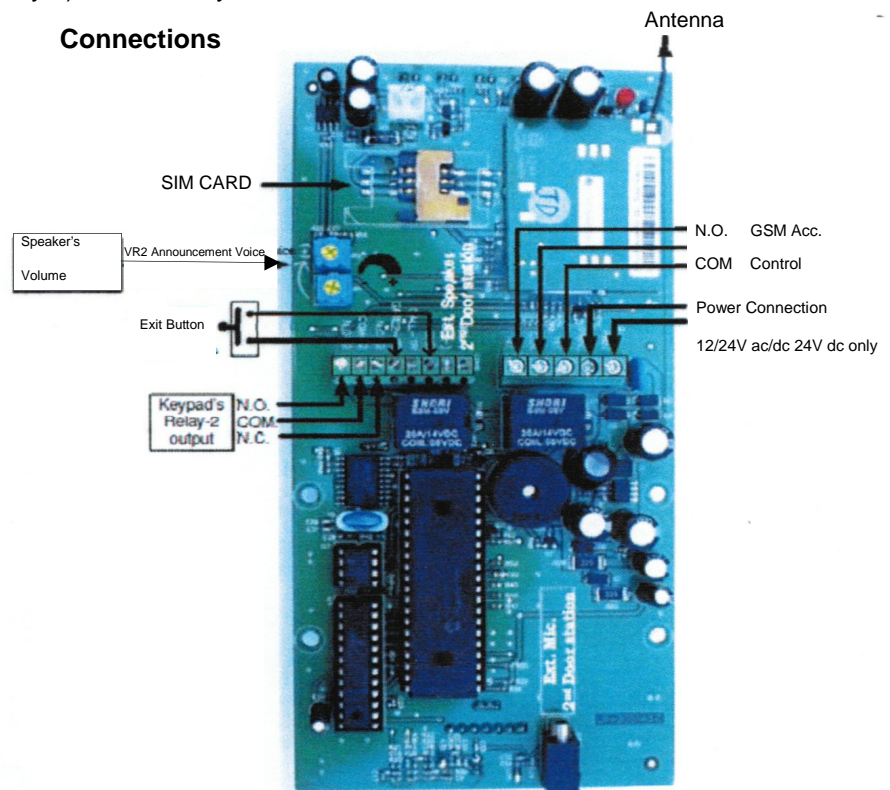
The system enables up to 999 users of the building to open the gate from their mobile phone from any distance with no limit of range and with no cost of a call to them.

The system also enables the users to open the gate with a 4-digit PIN code via the Keypad of the Door Station.

Easy Maintenance

All programming can be done on-site or off-site wirelessly by Master Phone Number.

Connections



Imported and marketed in New Zealand by **GATE DRIVE SOLUTIONS LTD.**

2/69 Roseberry Ave, Birkenhead, North Shore City, Auckland. 0626

The Information contained in this document is subject to change without notice

21 July 2015